

FIREBALL MAIL

Southern Wisconsin Bluegrass Music Association, Inc. Newsletter

May/June '09

BLUEGRASS MUSIC JAMBOREE FUNDRAISER

MAY 16, 2009 NOON-8PM
HIGH NOON SALOON
701A E. WASHINGTON AVE. MADISON

LIVE MUSIC! RAFFLE PRIZES! FOOD! JAMMING! DANCING!

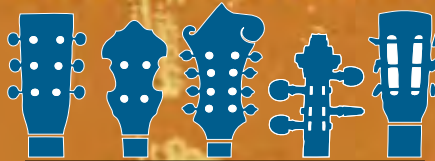
Open jamming: Noon-2pm.
Show up with your instruments or just to listen!

FEATURED BANDS

2PM WOODEN BRIDGES 3PM TRUMAN'S RIDGE
4PM ROUND THE BEND 5PM OAK STREET RAMBLERS
6PM LIBERTY BLUEGRASS 7PM JEFFERSON COUNTY

SWBMAI Members \$12

Kids under 12 FREE



SOUTHERN WISCONSIN
BLUEGRASS
MUSIC ASSOCIATION, INC.

Non-Members \$15

FIREBALL MAIL

Volume 26 Issue 3

Fireball Mail is published bimonthly: January, March, May, July, September, and November.

Please send advertising inquiries, articles, calendar information, photos and letters to :
Southern Wisconsin Bluegrass Music Association, Inc.
P.O. Box 7761
Madison, WI 53707-7761
Attn: Fireball Mail

E-mail: FireballMailEditor@gmail.com

Deadline for submissions is the 10th of the month preceding the month of publication.



SWBMAI is a member of IBMA (International Bluegrass Music Association) and the International Bluegrass Music Museum



Proud Supporter of WORT 89.9 FM

Every Tuesday
Pastures of Plenty,
9:00 am - noon with John Fabke
Every Wednesday
Back to the Country,
9:00 am - noon with Bill Malone
Every Friday
Mud Acres Bluegrass Special,
9:00 am - noon with Chris Powers

Southern Wisconsin Bluegrass Music Association, Inc.

The SWBMAI is a non-profit educational organization devoted to the preservation and promotion of bluegrass music, and supported by the volunteer efforts of its members.

The SWBMAI mission as stated in the by-laws:

- 1) To promote bluegrass music and musicians
- 2) To bring together persons of all ages who enjoy singing, playing and listening to bluegrass music
- 3) To hold regular bluegrass jam sessions
- 4) To publicize information about bluegrass concerts and festivals
- 5) To help younger persons obtain instruments and instruction in bluegrass music
- 6) To introduce bluegrass music to new listeners

SWBMAI Board of Directors

President; Marketing and Public Relations – Jean Knickelbine, jeanknick@gmail.com

Vice-President – Ellis Bauman, 608-257-2431, ellisabau@aol.com

Acting Secretary Rotation – Ellis Bauman, Jim Knobloch, James Brocksmith, Julie Cherney

Membership Chair – Sharon Manion, 608-424-3408, smdw@charter.net

Treasurer – Jon Peik, jrpeik@yahoo.com

Attendant Board Members

James Brocksmith, 414-803-7477, paxflyer@earthlink.net

Julie Cherney, 608-260-2675, cherney@uwalumni.com

Jim Knobloch, knobhill@chorus.net

Catherine Rhyner, 608-835-8117, catherine.rhyner@gmail.com

Webmaster – Scott Knickelbine, swbmai@gmail.com

Other Member Volunteers: Debra Amesqua, Denny Egstad, John Fabke, Fay Ferington, Carolyn Hegeler, Mary Helmke, Dave Nance, Fred Newmann, Chris Powers

Board Meetings

The board usually meets the first Wednesday of each month, at 6:00 pm at the Bar Next Door, 232 E. Olin Ave., Madison, WI. If you would like to attend, contact a board member to be sure of the date, time and location; they are subject to site availability and holiday dates.

Board Meeting Minutes

The Southern Wisconsin Bluegrass Music Association, Inc. board meeting's condensed minutes are available on line at www.swbmai.org. If you would like minutes mailed to you please send a stamped self-addressed envelope to SWBMAI Secretary Sharon Manion, P.O. Box 7761, Madison, WI 53707.

Fireball Mail

Please let us know whether you want e-mail delivery or mail delivery of your newsletter. E-mail newsletters are in color and arrive sooner than the B&W mailed version. Please tell us when renewing your membership or e-mail Sharon Manion at smdw@charter.net.

MICHAEL BEST
& FRIEDRICH LLP

A Message from the Past President

So Much Bluegrass, So Little Time.... A friend recently asked me "How is the Bluegrass music scene in Madison?" "Healthy and well," I replied. This week alone (April 11-18) offers the chance to see ten different bluegrass style bands at local venues. Another seven are playing next week, including Bill Evans and Megan Lynch. Not to mention the handful of jams available each week.

SWBMAI has recently welcomed two new board members, Julie Cherney and James Brocksmith. Already their presence is being felt and they both bring valuable perspectives and energy to the cause. The SWBMAI membership renewal campaign is in full swing. We thank those of you who have renewed or joined, and encourage those of you who haven't yet, to do so soon. And summer festival season is practically here: Brooklyn Bluegrass next month, Sugar Maple and Gandy Dancer not far behind.

It's also against this back drop that I have stepped down as SWBMAI president. It has been a rewarding year at the helm, but it is time to do other things. Namely, the federal government has funded one of my pet research projects (smoking cessation), and that's a worthy cause that needs my attention, too.

I leave SWBMAI in capable and energetic hands, as Jean Knickelbine will succeed me as president. You'll hear from her in the next issue but please join me in welcoming her in the meantime.

See you soon,
George
georgelreynolds@gmail.com

Marshall Community Library: Music to Our Ears

Submitted by: Ellis Bauman

The Madison Community Foundation recently awarded fifteen libraries in Dane County \$27,500 to build unique, focused collections over the next three years. The library in Marshall, located just outside of Madison, selected music as its Library Collections Grant focus.

Materials span nearly all formats available including books, periodicals, CDs, mp3s, videos, software, games, tools, and more. The grants translate into thousands of new materials.

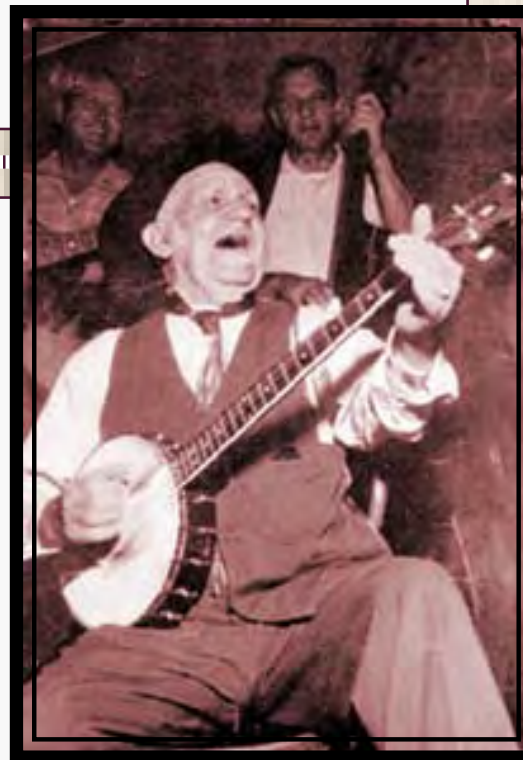
Marshall Community Library Director Diana Skalitsky, when asked to describe a sampling of what is now available thru their collection, said: "The library system had lots of contemporary music thanks to Madison's vast collection, but we were lacking historical and period music.

"We chose historical documentaries as diverse as Good Rockin' Tonight; the Legacy of Sun Records , which describes the early days of rock and roll, and

Awake, My Soul: The Story of the Sacred Harp, a documentary about shape-note singing, some of the oldest music in America.

"From the Smithsonian collection we obtained ballads, popular music from other eras, and protest songs. I also purchased complete collections of country and rock performers. When a staff member went to Arkansas I asked her to go to the Cultural Center of the Ozarks and purchase old-timey music."

Most materials are available through interlibrary loan. Stop at your local library to ask or visit the online library catalog LINKcat: www.linkcat.info.



Uncle Dave Macon

Worth \$650! **ADVANCE TICKET HOLDERS ONLY!**
Door County Bluegrass Camp FREE Tuition Drawing
 Go to www.swbmai.org/jamboreetickets and Buy Yours.

Buy advance tickets for SWBMAI Jamboree admission and you're automatically entered to win a special drawing for FREE tuition to the Door County Bluegrass Camp. A prize worth \$650! And only advance ticket holders are eligible to win.

The SWBMAI Bluegrass Jamboree Fundraiser is May 16 from Noon - 8:00 pm at the High Noon Saloon, 701 E. Washington Ave., Madison, WI. Remember, it's our only fundraiser of the year so come on out and support local bluegrass.

The event features six hours of live bluegrass from some of the area's hottest bands, an open jam session as well as a raffle for other valuable prizes. Advance tickets may be purchased at www.swbmai.org/jamboreetickets using most



major credit cards: \$12 members, \$15 non-members, kids under 12 are free.

Tickets will also be available at the door on the day of the show but then you won't be eligible for the special Door County Bluegrass Camp drawing!

The day kicks off with a two-hour open jam from noon until 2:00 pm. Players of all abilities are welcome to bring their acoustic instruments and join in. Beginning at 2:00 pm, six SWBMAI member bands will start to take the stage every hour on the hour, each performing a 45-minute set of traditional and progressive bluegrass music. Tickets for other raffle

prizes will be on sale all day.

The winner of the SWBMAI Jamboree Advance Ticket drawing wins free tuition at The Door County Bluegrass Camp — a \$650 prize! The camp is held August 2-7, 2009 at The Wagon Wheel Resort in Ellison Bay in beautiful Door County Wisconsin. The winner is responsible for their own accommodations but there are plenty of options from which to choose. The Wagon Trail Campground is within walking distance of the camp. Other accommodations can be found by visiting www.doorcounty.com or by calling 800-527-3529.

The camp will focus on building instrumental skills for the experienced beginner through the advanced player. Each day will include morning and afternoon classes on your instrument, plus a variety of workshops including songwriting, music theory, harmony singing, chart reading and writing, tab, instrument repair and maintenance, round, square, and contra dance, yodeling, story telling with music and of course jam sessions. After-supper activities will include student group performances, a dance, a film, instructor performance and of course some late night picking in the Stuga cabin. A concert/dance for the public at the end of camp will be a treat for all.

Instrumental instruction will include bluegrass bass, guitar, banjo, fiddle, mandolin, dobro, slide, small group playing and jamming, and private lessons. Group classes will be limited to 10 or fewer students.

Additionally, students and their families may want to take advantage of the outdoor activities at the resort including hiking, swimming, biking, tennis, volleyball, charter fishing, boating, fitness room, indoor pool, whirlpool and sauna, wireless internet and much more. If you choose to bring your family along, they will never get bored! For more information on the Door County Bluegrass camp visit: <http://www.violynn.com/index.htm> or call 920 - 839 - 2777.



Ellison Bay • August 2 - 7, 2009

SWBMAI Welcomes New Member Band: Big Cedar

Let us introduce you to Big Cedar, a bluegrass band out of West Bend and a new SWBMAI member band. Big Cedar has been performing locally and at regional festivals for 17 years, allowing them to indulge their passion for acoustic and bluegrass music. The band performs instrumental as well as vocal numbers with three- and four-part harmony — even some old time gospel.

Introducing the band members: Jim Burch (banjo, dobro, guitar and mandolin as well as baritone and lead vocals); Steve Dekker (bass); Tim Dekker (fiddle and sings lead, tenor and baritone); Marty Burch (rhythm guitar and sings lead or tenor); Keith "Peachy" Keehn (mandolin, guitar and sings lead and harmonies). Together, these folks form Big Cedar.

Jim and Marty have a bluegrass radio show every week on WBKV AM 1470 airing Sundays from 4:00 - 6:00 pm. Jim's extensive Bluegrass CD collection has given him a solid base of music to play. Jim and Marty also try to be informative about the music being played as well as fun to listen to.

Big Cedar has a number of CDs available. They also have plenty of performance dates coming up, one of which is a 1:00 performance at the Brooklyn Bluegrass Festival. This group really knows its way around stringed instruments. If you haven't heard them yet, give them a listen soon.



2nd Annual Northwoods Bluegrass Festival

June 12, 13 & 14, 2009

Rusk County Fairgrounds, Ladysmith WI

presented by Greater Ladysmith Area Chamber of Commerce & Rusk County Tourism

Festival Schedule:

Friday June 12: 6 pm – 10 pm

Saturday, June 13: 10 am – 10 pm

Sunday, June 14: 10:30 am – 3 pm

Bands include: Art Stevenson & High Water; Lincoln Boys; Hand-Picked Bluegrass; Tangled Roots; New North String Band and Alzen Family Band

Ticket Prices:

Advance Sales: Fri. & Sat. \$20.00 Gate Prices: Fri. only - \$10.00 • Sat. only - \$15.00 Sun. – Donation
Age 15 and under FREE with a paid adult admission

Camping Prices: Gates open for campers at noon on Thurs. (Thurs, Fri & Sat only)

On-site "rough" camping \$10.00/per night • Camping w/elec. (max. vehicle lgth-30 ft)... \$18.00/per night (limited spots)

FREE "Jammin' in the Barn" Thursday night • Bluegrass Instrument Workshops Fri. & Sat.
Open mic session on Saturday • Children's activities • Non-denominational church service on Sunday
Door prizes; hospitality booth with local business coupons; food vendors and more.
Rusk County Historical Society events and Dairy Breakfast on the fairgrounds.

This is a family-friendly, no alcohol event, bring your favorite lawn chair and enjoy some great Bluegrass music!

For tickets or information call: 715-532-7328 or 715-868-2886 • Email: serenity1@brucetel.net or glacc@centurytel.net
Websites: www.ladysmithchamber.com or www.ruskcounty.org

Supported in part by grants from: Wal-Mart Community Foundation & Plum Creek Foundation

Generously Sponsored by:

WISCONSIN
WOW! BOO! YEAH!



LEGION PARK

BROOKLYN, WI

5TH

ANNUAL

BROOKLYN

TICKETS:

\$10 - FRI

\$20 - SAT

\$25 - FRI & SAT

JUNE
5TH & 6TH
2009

BLUEGRASS
Festival

FRIDAY, JUNE 5, 2008

7 PM: NEW NORTH STRING
BAND (EAU CLAIRE)

8 PM: CHICAGO BLUEGRASS
BAND

SATURDAY, JUNE 6, 2008

10 AM: 2 INSTRUMENTAL TECHNIQUE WORKSHOPS

11 AM: OPEN MIC

1 PM: BIG CEDAR (MILWAUKEE AREA)

2 PM: ROUND THE BEND (MADISON)

3 PM: JAMES CREEK ROAD (ILLINOIS)

4 PM: CORK N BOTTLE (MADISON)

5 PM: WHISTLEPIGS STRING BAND
(TWIN CITIES)

6 PM: OAK ST RAMBLERS (MADISON)

7 PM: TRUMAN'S RIDGE (ILLINOIS)

8 PM: THE JAMES KING BAND



THE JAMES KING BAND

ROUGH CAMPING AVAILABLE WITH CAMPFIRES - \$7/NIGHT. JAMMING. LOCAL CHURCHES AND SERVICE CLUBS PROVIDE HOMEMADE FOOD AND BEER (NEW GLARUS, MILLERS). HANDICAPPED ACCESSIBLE. FUNDED IN PART BY THE WISCONSIN ARTS BOARD. QUESTIONS: 608-455-1457; 608-235-0966 CELL (NADINE WALSTEN) OR 608-455-4201 (VILLAGE HALL, 8-4, M-F, ASK FOR CAROL/KIM) LEGION PARK IS LOCATED 15 MI SOUTH OF MADISON OFF HWY 14 ON HWY 92. SEE WWW.BROOKLYNBLUEGRASSFESTIVAL.COM FOR MORE DETAILS.

Bluegrass Web Sites Safe from Spyware and Malware

Submitted by: David Nance

The internet is full of websites that are basically traps to draw in as many people as possible and to attempt to get them to click on something – perhaps one of the many advertisements that crowd such sites, or, more frequently, a pop-up window – which will then install spyware or malware on their computer. The bait these sites use are things that lots of people are always surfing the internet looking for: free online games, game cheats and codes, adult content, and — song lyrics. That's why looking for song lyrics by just Googling the name of the song and the word "lyrics" can get you into trouble: it can drop you at one of those unsafe sites. It's better to start by going to a known safe site that specializes in lyrics or other resources (like sound files) for the kind of music you're looking for. Here are some sites that are good resources for bluegrass, country, old-timey, and traditional Americana:

Bluegrass Lyrics: Perhaps the best, most reliable resource is: <http://www.bluegrasslyrics.com/> - lyrics to a LARGE number (must be over 1,000) of bluegrass and early country songs. Special lists for songs of Bill Monroe, Flatt and Scruggs, Stanley Brothers, Jimmy Martin, Carter Family, Delmore Brothers, Louvin Brothers, Bluegrass Gospel, and "Brother Duets." The site is wholly non-commercial: no ads of any kind.

The Kitagawa Collection: Motoya Kitagawa, a Japanese fiddle player, compiled a large set of bluegrass, early country and other song lyrics. He is no longer actively maintaining this site, but a number of other bluegrass enthusiasts replicated or "mirrored" his list. It has over 1,100 songs (not all bluegrass, but still a very good collection). One set is available at <http://legacy.bluegrassnet.com/Songbook/songbook.html>. Holmesburg Jam, a long-running acoustic jam in the Philadelphia area, also has a replication of the Kitagawa collection here: <http://www.holmesburgjam.com/songbook.htm>

Carter Family Songs: The Holmesburg Jam has a large collection of Carter family songs, here: <http://www.holmesburgjam.com/carterfamily/index.html> Another version of that resource is here: www.traditionalmusic.co.uk/carter-family-songs/Carter%20Family.htm

The Mudcat Café: <http://www.mudcat.org/> has a lot of song lyrics in its "Digitrad" (DT) database ... they claim around 9,000. In the lower part of the *Lyrics & Knowledge Search* box, you can choose to browse in the DT Lyrics database by first letter of song title, or search directly for song titles or words.

The Max Hunter Collection: An archive of almost 1,600 Ozark Mountain folk songs, recorded between 1956 and 1976. A traveling salesman from Springfield, Missouri, Hunter took his reel-to-reel tape recorder into the hills and backwoods of the Ozarks preserving the heritage of the region by recording the songs and stories of many generations of Ozark history. Mostly has lyrics (no chords) but, there are also audio files of all the songs so you can hear what they sound like. Most have audio files in two formats: real audio, which requires Real Player, and AIFF, which plays using QuickTime. Some have midi files, and some have actual scores showing the melodic line.. A nice feature is links to all variants (and many songs have variants). <http://maxhunter.missouri-state.edu/index.html>

Library of Congress American Memory Collections: www.loc.gov/folklife/onlinecollections.html Perhaps the most valuable resources here for bluegrass / old-timey music fans is the *Dust Bowl Songs* collection: memory.loc.gov/ammem/afctshhtml/tshome.html (113 songs with lyrics and audio files in different formats) and the Fiddle Tunes collection memory.loc.gov/ammem/collections/reed/ (184 tunes with helpful notes on key, meter, structure, etc., and audio files in different formats).

continued on back page



Jams and Open Mic Events May / June 2009

EVERY MONDAY

Bluegrass, Folk & Traditional Country Jam and Open Mic, Dry Bean Saloon, 6:30 - 10:30 pm, 5264 Verona Rd., Madison, WI Host: Dave Bacholl (Info: 608-906-6036)

Bluegrass Jam, Bar Next Door, 222 E. Olin Ave. Madison, WI 6:00 -10:00 pm. No mics or sign up sheet; (Info: 608-256-9430)

EVERY TUESDAY

Instructor-Led Jam Classes at The Bar Next Door, 222 E. Olin Ave., Madison, WI. SWBMAI sponsored instruction: 1st Tuesday Jon Peik 7:30 pm; 2nd Tuesday with Guest Instructor 7:00 pm; 3rd Tuesday with David Nance 8:00 pm; 4th Tuesday with Catherine Rhyner and Mary Helmke 7:00 pm; 5th Tuesday with Guest Instructor 7:00 pm. \$5.00 instructor donation. (Info: Ellis Bauman, 608-257-2431)

2nd and 4th TUESDAY

FIXX Coffee House Bluegrass Jam, 3558 E. Sivyer Ave., St. Francis, WI 7:00 -10:00 PM. One 30 minute open mic set before jam. (Info: 414-803-7477 Host: James Brocksmith)

EVERY WEDNESDAY

Northland Ballroom, 8:00 - 11:00 pm, N10103 Hwy 49 between Rosholt and Iola, WI. Hosted by Art Stevenson, Dale Reichert and Jim Prideaux. (Info: 715-677-3491 or visit www.highwatermusic.com/northland_ballroom.htm)

1st & 3rd THURSDAY

Apple Holler Bluegrass Jam & BBQ, 6:00 - 9:00 pm; Apple Holler Restaurant/ Orchard, 5006 S. Sylvania Ave., Sturtevant, WI (Info: www.appleholler.com or call 1-800-238-3629)

1st FRIDAY

Kenosha Folk Hootenany, 7:00 - 10:00 pm, Anderson Arts Center informal gathering in an old Lake Michigan mansion, 121 66th. St., Kenosha WI

1st and 3rd FRIDAY

Bluegrass Jam, Harmony Bar, 2201 Atwood Ave., Madison, WI, 9:30 pm - midnight. Hosts: The Trails End String Band (Info: www.myspace.com/trailsendstringband)

2nd FRIDAY

Ron's Old-Time Jam, Black Earth Bank, 1:00 - 4:00 pm, (lower level meeting room) Black Earth, WI. Host: Ron Poast (Info: 608-767-2553) www.ragtime88.com/swotfa

3rd FRIDAY

Acoustic Open Mic, Crossroads Coffeeshouse, 7:00 - 9:30 pm, 2020 Main St, Cross Plains, WI. Info: joesnare@tds.net or call Mary at the Crossroads, 608-798-2080) Host: Joe Snare

EVERY OTHER SATURDAY

Spirits, 735 S Watertown St, Waupun 11:00 am - 2:30 pm. All playing abilities welcome. (Info: Jeff Smith 920-324-3977)

1st SATURDAY

Riley Tavern, 2:00 pm, 8205 Klevenville-Riley Rd., Verona, WI

Take CTH PD to CTH J turn north on CTH J. Between Mt. Horeb & Verona. Host: Archie Lowman (Info: 608-845-9150)

Waukesha Church of Christ, 1:00 - 4:00 pm, 2816 Madison St., Waukesha, WI. Host: Pastor Greg (Info: 262-470-3644)

2nd SATURDAY

R.H. Landmark Saloon, 3:00 - 6:30 pm, 138 S. Main St. Jefferson, WI. Host: John Short (Info: 920-563-7441)

Spring Green General Store, 3:00 - 6:00 pm, 137 S. Albany St., Spring Green, WI. Host: Paul Bentzen, Doug Lloyd and Michael Connors (Info: 608-588-7070)

EVERY SUNDAY

Note the changes! Mazo Bluegrass Jam, 3:00 - 6:00 pm, Sunday afternoon bluegrass & old-time country jam & potluck dinner Mazomanie Music Conservatory, 18 Marion St., Mazomanie, WI. Last jam of the season is May 8. (Info: Jim at 608-767-2920)

EVERY OTHER SUNDAY

Old Time Acoustic Jam, Alchemy Cafe, 1980 Atwood Ave., Madison 5:00 - 7:00 pm (Info: Scott Knickelbine scottk@lcs-impact.com)

1st SUNDAY

Jam and Open Mic, Orfordville American Legion, 12:00 - 6:00 pm. Full Bar. Food available. Dancers welcome! Orfordville, WI on Hwy 213 S. just south of Hwy 11. Host: Fritz and Donna Jaggi (Info: 608-897-4286) Season's last jam is June 7.

Life Spring Coffee Shop, 1:00 - 4:00 pm, 7578 Hwy 51, Minocqua WI Host: Rich Gadow (Info: 715-588-9498) www.headforthedome.com

2nd SUNDAY

Hazelhurst (Yawkey) Town Hall, 1:00 - 5:00 pm, Hwy 51, Hazelhurst, WI. Host: Keith Justice (Info: 715-356-3793)

BBMA Bluegrass Jam, 2:00 - 5:00 pm, Borders Books, River Point Shopping Center, 8705 N. Port Washington, Fox Point, WI (Info: 414-540-1427 www.badgerlandbluegrass.org)

3rd SUNDAY

The Lake Country Jam, 1:00 to 4:00 pm. Good Harvest Market community room. 1850 Meadow Lane, Pewaukee, WI. www.goodharvestmarket.com/classes_events/Calendar_of_Events_Classes_Workshops_and_tours.html

4th SUNDAY

Viroqua Bluegrass & Gospel Music Association Bluegrass Jam, 1:30 - 4:30 pm, Park View Ct, Viroqua, WI (Info: 608-637-3820 dlpeter@mwmt.net www.viroquabluegrass.com)

Acoustic Jam, The Attic, 2:00 - 4:00 pm, 730 Bodart Street, Green Bay (Info: www.theatticbooks.com or 920-855-2627)

Festivals, Workshops, Camps and Concerts

Summer 2009 Regional Festivals • Submitted in Part by Carolyn Hegeler

- MAY** 16 **SWBMAI JAMBOREE FUNDRAISER**, Our only fundrasier of the year! Noon – 8:00 pm; High Noon Saloon, 701 E. Washington Ave., Madison, WI; Tickets: \$12 members, \$15 non-members, kids under 12 FREE!
- 16 Brian Wicklund FiddlePal Workshop, 1:00 - 5:00 pm, Offbeats Violin Studio, 123 Graham Ave., Eau Claire, WI. <http://offbeatsviolinstudio@yahoo.com>; www.fiddlepal.com
- 29-1 Minnesota Homegrown Kickoff Music Festival, El Rancho Mañana Campground and Riding Stable, Richmond, MN. Over 20 regional groups . Tickets: \$5 - \$45. Under 12 FREE! www.MinnesotaBluegrass.org
- JUNE** 2 Alan Munde Banjo Workshop, 6:00 - 9:00 pm, Quarry Arts Building, Madison, WI; Limit: 15; \$60. Info: Carolyn Hegeler 608-238-6863 or chegeler@tds.net
- 5-6 5th Annual Brooklyn Bluegrass Festival with headliner The James King Band, American Legion Park, Brooklyn, WI. Rough camping available. Tickets: \$10 - \$25; kids 12 & under FREE; Info: 608-455-1457 or www.bluegrassinbrooklyn.com SEE AD IN THIS ISSUE! SWBMAI Supported!
- 6-7 Build an Acoustic Guitar with Luthier Debra Amesqua, 9:30 am - 5:00 pm, WoodCraft's Workshop, Madison (June 11 and 18 from 6:00 - 8:30 pm, too.) \$675 includes choice of guitar kit. Advance registration only. Debra is donating instructor fee proceeds to SWBMAI! Info: WoodCraft 608-273-8868
- 12-14 2nd Annual Northwoods Bluegrass Festival, Family-friendly, no-alcohol event; Kids under 15 FREE, Camping on-site; Rusk County Fairgrounds, Ladysmith WI. SEE AD IN THIS FIREBALL MAIL ISSUE!
- 12-14 Bluegrass on the Lakeshore, AHR's Heritage Farm, N2251 State Hwy 42, Kewaunee, WI. Camping and food available. Info: 920-388-0604 or www.bjorgensonbluegrass.com
- 13-20 43rd Bean Blossom Festival, Bill Monroe Music Park & Campground, Bean Blossom, IN. 8 days; over 50 bands including the top names in bluegrass. Information 800-414-4677 or www.BeanBlossom.com
- 17-21 Flatrock Bluegrass Jamboree, Fuddfest Grounds, Cty Hwy H, Antigo, WI. Info: www.flatrockbluegrass.com
- 19-20 SlingerFest 2009, Slinger Community Park, Hwy 44, Slinger, WI. FREE! Info: 262-644-7606.
- 23-26 Brian Wicklund's Lake Country FiddlePal Camp for youth ages 8 to 18; Christ Lutheran Curch, 150 5th St., Marine on St. Croix, MN. Info: 651-433-4564 or www.fiddlepal.com
- JULY** 10-12 7th Annual Traditional Bluegrass and Gospel Music Festival, Vernon County Fairgrounds, Viroqua, WI. Info: www.viroquabluegrass.com
- 11 10th Archie Fest Bluegrass Festival, Mondeaux Dam Lodge, Medford, WI. Info: www.mondeauxdamlodge.com
- 24-26 20th Midsummer in the Northwoods Bluegrass Festival, Cozy Cove Tavern and Campground, Manitowish Waters, WI. Info: 715-543-2166.
- 24-26 28th Backbone Bluegrass Festival, Strawberry Point, IA. Info: www.strawberrypoint.com/Bluegrass/bluegrass.htm
- 31-1 Sugar Maple Festival, Lake Farm County Park, 4330 Libby Road, Madison, WI Featuring headliner JD Crowe & the New South, Tickets \$14-\$30, Info: www.sugarmaplefest.org SWBMAI Supported!
- AUGUST** 2-7 Door County Bluegrass Camp, Wagon Wheel Resort, Ellison Bay, WI. Instrumental skill focus for the experienced beginner through the advanced player. Workshops include songwriting, music theory, harmony singing, chart reading and writing. Info: 920-839-2777, www.violynn.com/index.htm SWBMAI Supported!
- 7-9 Shawano Folk Festival, Shawano, WI. Info: www.shawanofestival.com
- 9 MBOTMA Festival, Richmond, MN Info: www.minnesotabluegrass.org
- 14-15 12th LarryFest, LarryFest Grounds, S2096 - 24 Valley Rd., LaFarge, WI. Advance tickets (\$50) available online; no tickets sold at the gate again this year. Info: www.kvama.org/index.php .
- 15 3rd Gandy Dancer Festival, Brodhead Street, Mazomanie, WI. FREE. Family-friendly event; 6 bands; bluegrass jam, model train exhibit and FREE train rides. Info: www.midcontinent.org SWBMAI Supported!
- 16 The Kruger Brothers with Philip Zanon 1:00 - 4:00 pm; Banjo, Guitar, Bass, Sound Tech Workshops, Unitarian Meeting House Annex, Madison. \$60. Limit: 15. Info: Carolyn Hegeler 608-238-6863 or chegeler@tds.net
- 17 Bluegrass for Hunger Festival, Apple Holler Restaurant/Orchard, 5006 S. Sylvania Ave., Sturtevant, WI (Info: www.appleholler.com or call 1-800-238-3629)
- 21-23 Chippewa Valley Gospel & Bluegrass Festival, Bruce, WI. Info: www.bluegrassbruce.com
- 21-23 Mt. Morris Jam Camp, Mt. Morris Camp & Conference Center, Mt. Morris, WI. Info: www.mtmjamcamp.com
- 28-30 5th Porcupine Mountains Music Festival, Porcupine Mountains Wilderness State Park, Ontonagon, MI. Over 30 artists including Charlie Parr. \$30-\$90. Info: www.porkiesfestival.org
- 28-31 Randy Elmore Fiddle Workshop, Monches Mill House, Hwy E, W301 N9430, Hartland, WI. Info: 505-270-3546
- 29 Northland Bluegrass Festival, Rosholt, WI. Info: www.highwatermusic.com

SWBMAI Members Take a Break

Meet New SWBMAI Board Member Julie Cherney

I'm thrilled to be a part of the Southern Wisconsin Bluegrass Music Association and look forward to working with the organization and community to promote great bluegrass bands and opportunities for musicians of all types to participate in jams and educational opportunities such as workshops and music camps.

My love for this music has been life-long, but really came to fruition during my days as a Peace Corps volunteer in Sri Lanka. The only Americana music available at that time was through fellow volunteers and whatever friends and family could send from home. For whatever reason, bluegrass was abundant among us PCVs. And since TV, computers or any other distraction was non-existent in my little jungle village, books and bluegrass were it! Allison Krauss and Union Station, Tony Rice, J.D. Crowe and the New South, and Flatt and Scruggs all came to my aid when I got the homesick blues.

Upon my return to the States, I vowed to seek out bands in Madison. Since then, not only have I found



Julie Cherney, center in pink, with fellow NashCampers.

them, but have become a musician of sorts myself. And through participating in jams/camps/workshops, I've discovered a wonderful community of like-minded people.

I look forward to working on the board and meeting all you fellow bluegrass lovers!

Meet New SWBMAI Board Member James Brocksmith



SWBMAI has played a large part in my bluegrass life over the last seven years. When my family and I relocated from North Carolina back in '02, I was in search of bluegrass "Way Up Nort."

Back in North Carolina you can't get away from bluegrass (which is way fun). SWBMAI offers great events, manages a fine events web calendar and does a great job promoting bluegrass in a non-

bluegrass part of the country. I only want to add to the good things the association is doing.

Personally, I have a bride of 16 years and two great soon-to-be 4 year old set of twins (boy and girl). I currently am a stay at home dad, while my wife brings home the bacon. My previous career was serving as a Midwest Airlines MD80 Captain (furloughed). I am also a Navy veteran.

My music life includes Liberty Bluegrass Band which I started 4 years ago and has been very satisfying. I also host a Jam in St. Francis (Milwaukee area), so please come on over. We jam the 2nd and 4th Tuesday of the month. I also volunteer my time at the Southeastern Wisconsin Juvenile Diabetes Research Foundation and WAMI (WI Area Music Industry).

Please feel free to call on me with association concerns or questions. I am not the spokesperson of SWBMAI, but I do play one on TV. My email paxflyer@gmail.com; my phone is 414-803-7477

Thanks and keep on pickin'.



Archie Lowman Photo by Fay Ferington

Archie Fest Bluegrass Festival Saturday, July 11, 2009 Chequamegon-Nicolet National Forest

Former Olympian and local bluegrass guitarist Archie Lowman

Family Ties, The Lang Bothers, Archie and the Wild Cats, and Northern Trails. But that's just the start because the jamming goes on all day and well into the night. Most jammers stay at the Picnic Point campground located within the Chequamegon-Nicolet National Forest on the lake shore of the Mondeaux Flowage and they just keep on pickin' under the stars. If camping isn't for you, Medford offers a number of hotels, cabins and lodges, too.

is THE Archie of Archie Fest. This 10th annual FREE bluegrass event is held at the Mondeaux Dam Lodge in the beautiful Chequamegon Nicolet National Forest just 20 miles northwest of Medford from 1:00 p.m. to 11:00 p.m.

Bring your own lawn chairs and spend a day at the lake listening to some good ol' bluegrass music. The bands appearing are: Dean and the Honkeytonk Heartbreakers, Grand Daddy and the Feather Pickers,

No carry ins are allowed but there is a full lunch and dinner menu at the Lodge where you will also find boat, canoe, paddleboat and pontoon rentals. There is a canoe and kayak fishing contest in the morning, too. Or, you can go explore the miles and miles of hiking trails. Contact: Mondeaux Dam Lodge at 715-427-5746 or www.mondeauxdamlodge.com for more information.

LANE'S LUTHERIE & VIOLINS
DEALERS, MAKERS, & RESTORERS OF VIOLINS & BOWS

4269 W. Beltline Highway Suite B • Madison, WI 53711 • (608)442-0315 • www.laneslutherie.com

Gandy Dancer Festival Saturday, August 15, 2009 Mazomanie

The 3rd annual Gandy Dancer Festival is set for Saturday, August 15, at the Westland Promenade in Mazomanie; this is the same location as last year. The music line-up again reflects a strong Bluegrass presence with the Kruger Brothers of North Carolina, as headliners.

SWBMAI member band Art Stevenson & High Water will perform Gospel and Bluegrass sets on the main stage and lead an afternoon jam. Other regional favorites include Mama Digdown's Brass Band, the Ken Lonnquist Band, Cris Plata & Extra Hot and the Redbirds featuring



SWBMAI's John Fabke and Paul Kienitz. Bill C. Malone and Chris Powers will act as emcees.

A "Meet the Kruger Brothers" session is set for Saturday afternoon, and the Krugers will also present workshops at the First Unitarian Society on Sunday afternoon, August 16. They'll round out their stay in Madison with a show at the High Noon Saloon on Sunday evening.

As schedule details become available they will be posted

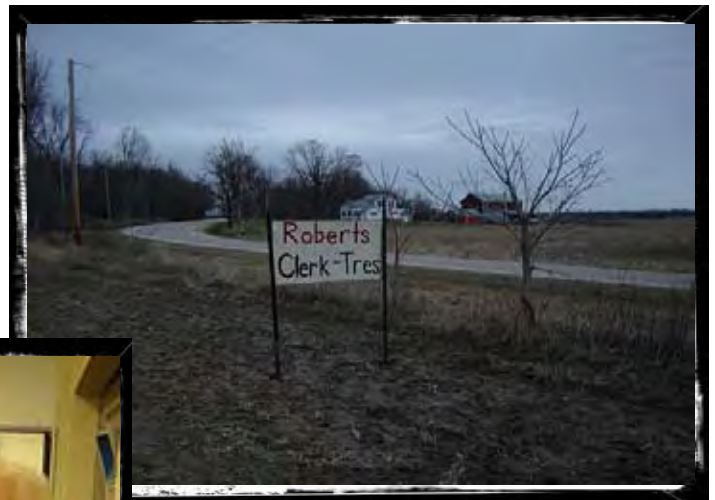
on the website of festival sponsor, Mid-Continent Railway Museum: www.midcontinent.com.

Fritz & Donna's Orfordville Jam: Sunday, April 5, 2009

A Photo Essay by Arvid Berge

Submit your photo(s). If we use the shot(s) you win a free SWBMAI t-shirt. Arvid's entire photo essay is found at: <http://www.flickr.com/photos/29153784@N08/>

My friend Calvin and I drove down to Orfordville to enjoy an afternoon of down-home music at Fritz and Donna's Sunday Bluegrass Jam at the American Legion Hall. Orfordville is a wide spot in the road about 25 miles south of Madison. We drove through gently rolling countryside with fallow fields on either side. Calvin noted that one farmer had actually attempted spring plowing. But, after a few furrows were plowed, had apparently given up. Grey skies and leafless trees, brown grass and nothing in bloom presented a drab landscape where any colorful thing became more noticeable by comparison. I've included a few shots taken on our journey to contrast with the images of the colorful assembly that awaited us in the Legion Hall. The only thing missing from these pictures is the acoustics. Some of them are grainy and poorly exposed. Goes with the territory, I think.



If your message is bigger than your acreage... abbreviate.



Fritz and a guy my camera couldn't ignore.



Trading verses between "Honky Tonk Angels" and "Wild Side of Life."



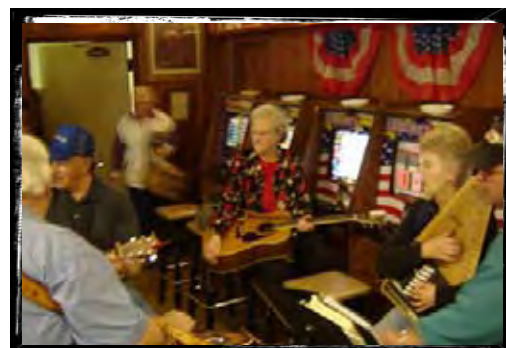
Pile your stuff on the pool table. Nobody's gonna shoot eightball with all this racket going on.



One of the first things you see when you enter the Legion Hall is the display above the coat rack.



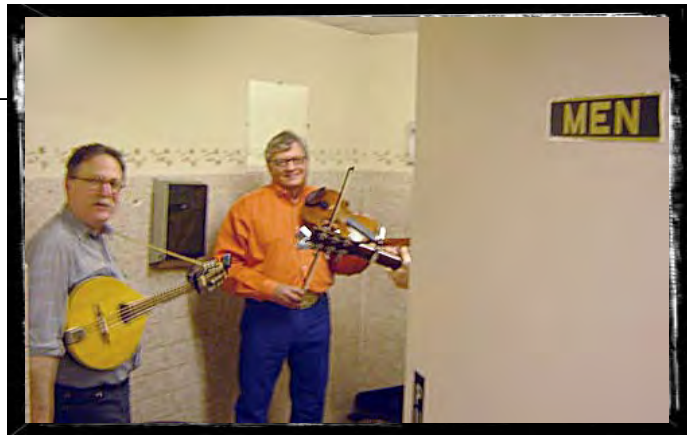
Her badge says she's a certified trapping instructor. She plays a mean mando and sings fine harmony when she's not setting traplines.



If you don't know the song, just turn around and play video poker until someone calls out a tune you know.



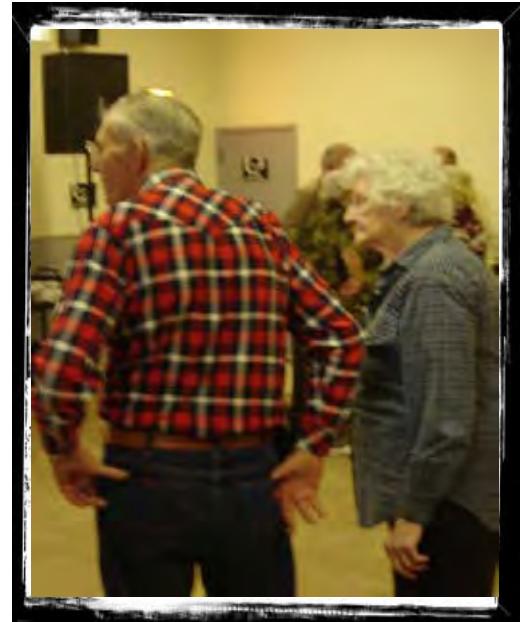
There's a connection between the mando player and the dobro player...but, I just can't put my finger on it.



No place is sacred when it comes to "Jammin." Better acoustics than the hallway, even.



Calvin. Posing, of course.



Would you please start the music so we can dance?



A group of "hot-lick" pickers. Way beyond my league. Fun to listen to though.



A nice group photo. That's Archie on the old Gibson Sunburst in the foreground on the left side. He knows all the classics.



A circle forms, a novice follows along at the edge, a bar patron is entranced by it all.

Current SWBMAI Member Bands

Above the Town – Jerry Loughney; 262-510-1128, jerry@abovethetown.com

Art Stevenson & High Water – Art Stevenson; 715-884-6996, artstevenson@tds.net

Big Cedar – Marty Burch (262) 338-6954 or Keith Keehn 262-338-0538, email:mdrbears@aol.com

Cream City Bluegrass and Gospel Music – Harvey Riekoff; 262-497-3024, tjbanjo@wi.rr.com, <http://creamcitybluegrass.net>

Eleike – Michael Bell; 608-238-2223, mike@michaelmbell.net, www.michaelmbell.net/eleike-presskit.htm

The High 48's – Eric Christopher; 651-271-4392, eric@thehigh48s.com

Jefferson County Bluegrass Band – Dale Ward; 608-712-8054, <http://jeffersoncountybluegrass.com>

Liberty Bluegrass Band – James Brocksmit; 414-803-7477, www.libertybluegrass.com

Monroe Crossing – Art Blackburn; 763-213-1349, art@monroecrossing.com

New Bad Habits – Chirps Smith; chirpsdot@aol.com

Oak Street Ramblers – Jeff Schoen; kunklej@gmail.com

'Round the Bend – Fred Newmann; 608-238-6863, fnewmann@wisc.edu

Truman's Ridge – Bruce Wallace; 815-603-1441, trumansridge@yahoo.com

Turtle Creek Ramblers – Dave & Michelle Wilson; 608-361-0770, www.turtlecreekramblers.com

Wooden Bridges Bluegrass Band – Rich Schwartz; 262-719-3549, <http://home.wi.rr.com/woodenbridges/>

Reminder! Guitar Builders' Workshop: June 6, 7, 11 & 18

Luthier Debra Amesqua has an acoustic guitar building workshop slated to begin at WoodCrafters in Madison. The first two classes run from 9:30 am to 5:00 pm over one weekend; the final two classes are held Thursday evenings from 6:00 pm to 8:30 pm. Enrollment is limited to just four people and all kits must be ordered through Woodcraft to enable class-

room instruction. Woodcraft's \$675 fee includes your choice of two guitar kits, class instruction and use of their fully-equipped workshop. Please note, Debra has generously offered to donate proceeds from her instructor fees back to SWBMAI! Class registration is on a first-come basis and is handled through Woodcraft either by phone (608) 273-8868 or in-person.

Member Band Schedules May / June 2009

May

- 8 *Big Cedar*, 7:30 – 10:00 pm, Luxury Box Sports Bar & Grill, 1204 Hwy 33 East, West Bend, WI Relay for Life Fundraiser, \$10
- 9 *Turtle Creek Ramblers*, 9:30 – 10:30 am, Northwoods Care Centre, 2250 Pearl St., Belvidere, IL FREE
- 9 *Art Stevenson & High Water*, Noon – 4:00 pm, Rusty's Backwater Saloon, 1715 West River Dr., Stevens Point, WI
- 9 *Turtle Creek Ramblers*, 1:30 – 2:30 pm, Maple Crest Care Centre, 4452 Squaw Prairie Rd., Belvidere, IL FREE
- 9 *Monroe Crossing*, 7:30 – 10:00, Sat, Zumbro Lutheran Church, 624 Third Avenue SW, Rochester, MN
- 15 *Big Cedar*, 7:30 – 10:00 pm, Still Waters Community Church All Request Show, 3617 Scenic Road, Jackson, WI \$10 or \$8 with a can of food for the local food pantry.
- 15 *'Round the Bend*, 8:00 – 10:00 pm, Wild Hog in the Woods Coffeehouse inside Wil-Mar Neighborhood Center, 953 Jenifer St., Madison, WI. \$2 Wild Hog members; \$3 non-members.
- 16 *Turtle Creek Ramblers*, 2:00 – 4:00 pm, NorthPointe Terrace, 5601 East Rockton Rd., Roscoe, IL
- 18 *Oak Street Ramblers*, 7:30 - 10:00 pm, The Malt House, 2609 E. Washington Ave., Madison, WI FREE
- 30 *Cream City*, 9:00 - Midnight, Paddy's Pub, 2339 N. Murray, Milwaukee, WI

June

- 6 *Oak Street Ramblers*, 9:00 pm Alchemy Cafe, 1980 Atwood Ave, Madison, WI FREE
- 13 *Turtle Creek Ramblers*, 9:30 – 10:30 am, Northwoods Care Centre, 2250 Pearl St., Belvidere, IL FREE
- 13 *Turtle Creek Ramblers*, 1:30 – 2:30 pm, Maple Crest Care Centre, 4452 Squaw Prairie Rd., Belvidere, IL FREE
- 15 *Oak Street Ramblers*, 7:30 - 10:00 pm, The Malt House, 2609 E. Washington Ave., Madison, WI FREE
- 20 *Turtle Creek Ramblers*, 2:00 – 4:00 pm, NorthPointe Terrace, 5601 East Rockton Rd., Roscoe, IL
- 20 *Truman's Ridge*, 6:30 – 8:30 pm, Sycamore Methodist Church, 160 Johnson Ave., Sycamore, IL
- 24 *Big Cedar*, 7:00 – 9:00 pm, Music in Jackson Park (W204 N16690 South Jackson Drive), Jackson, WI FREE but please bring a canned good for the local food pantry.
- 27 *Truman's Ridge*, Noon - 1:00 pm, 10th Annual Wendell Hickox Memorial Family Bluegrass Festival, Fairview Park, Casey, IL

SWBMAI Jamboree
Fundraiser is Saturday,
May 16 Noon - 8:00 PM

The High Noon Saloon
701 E. Washington Ave.
Madison, WI



Only Advance Jamboree
Admission Ticket Holders
are Eligible to Win the
DOOR COUNTY BLUEGRASS
CAMP TUITION Raffle.
Worth \$650!

SWBMAI Bluegrass Jamboree Advance Ticket Order Form

SWBMAI Members \$12 / Non-Members \$15 / Kids Under 12 FREE

Or Purchase On-Line at: www.swbmai.org/jamboreetickets and Use Your Credit Card!

Jamboree Attendee Name: _____

Address: _____

City: _____

State: _____ Zip: _____ Phone: _____

E-mail: _____

Additional Jamboree Attendee Name _____

Additional Jamboree Attendee Name _____

Additional Jamboree Attendee Name _____

Additional Jamboree Attendee Name _____

Additional Donation Amount: _____



SWBMAI's Only Fundraiser!



Safe Music Web Sites Go to Dave Nance's Article on Page 7 for More Terrific Site Listings

[The John Quincy Wolf Collection](http://www.lyon.edu/wolfcollection/ozarks.htm): www.lyon.edu/wolfcollection/ozarks.htm
Another collection of field recordings of old traditional songs from the Ozarks including lyrics, and audio files.

[The Alan Lomax Archive](http://www.lomaxarchive.com): www.lomaxarchive.com gives access to 40 second sound clips.

[Roger McGuinn's Folk Den](http://www.ibiblio.org/jimmy/folkden-wp/): <http://www.ibiblio.org/jimmy/folkden-wp/> Roger McGuinn of The Byrds has recorded a new folk or traditional song each month since Nov. 1996 expressly for the purpose of extending the folk process via the web. They're accessible at this site with lyric charts showing chords, and nice mp3 sound files. A good, highly eclectic set of old folk/country/traditional songs.

<http://www.lpdiscography.com/> This site is entirely non-commercial — no pop-up ads or ads of any kind, nothing being sold – apparently just the hobby of

somebody who enjoys documenting discography information about (mostly) country & western and bluegrass musicians. More country than bluegrass, but definitely a good amount of the latter.

The site is built around discography. You can select an artist and see a complete discography of that artist including extensive notes on personnel and other recording details. For SOME of the albums, the lyrics to all the songs on the album are provided. A lot of fine bluegrass albums listed here do not include the lyrics, but quite a few do (some Acuff, Flatt & Scruggs, Charlie Louvin, Osborne Bothers). There is also an alphabetical list of all song titles for which lyrics are available. This links to the particular album on which the song (with its lyrics) can be found.

The Fireball Mail is a publication of the Southern Wisconsin Bluegrass Music Association, Inc. Visit our web site at www.swbmai.org

Send change of address to:

**Southern Wisconsin Bluegrass
Music Association Inc.**

P.O. Box 7761 Madison, WI 53707-7761

Attn: Fireball Mail



Arvid Berge at Commanders' Row in Orfordville's American Legion Hall.